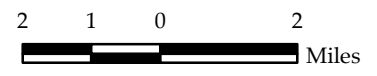


Sources: Land Use Land Cover & Hillshade provided by VCGI (2002); Statewide datasets provided by VCGI: Roads by VTrans (2013); NRCS Soils by NRCS (2008); Streams & Waterbodies by VHD (2010), County and Town Boundaries by VCGI (2012), Provided by TRC: Conceptual Project Alignment (2014)

- NECPL Proposed Alignment (TRC)
- Lake Maps Sheet Outline
- Public Water Supply Sheet Outline\*
- Natural Resource Sheet Outline
- Streams (VHD)
- Waterbody (VHD)
- Roads
- Town Boundary (VCGI)
- County Boundary (VCGI)

\*The Public Water Supply Map Series includes map sheets #4, 5, 17, 18, 24, 28, 29, 30, 32, and 49 because these are the only map panels where the Project crosses the SPA or is near to the water source for public water systems.

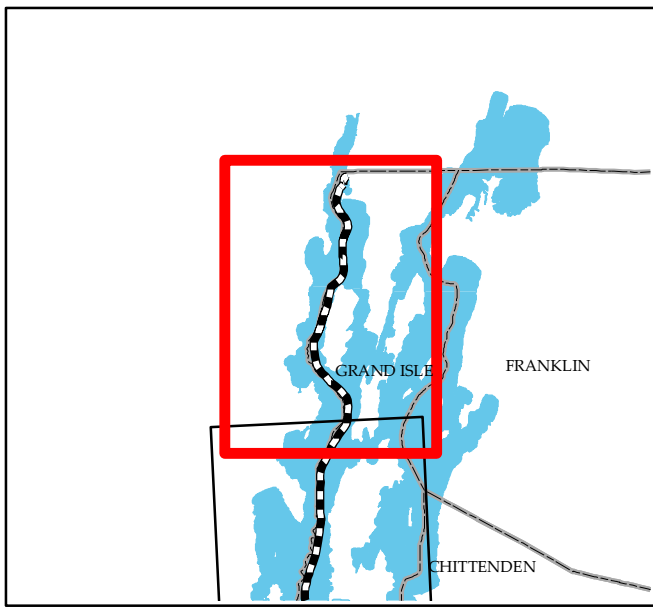


### TDI - NECPL Project Grand Isle, Rutland, & Windsor Counties, VT Natural Resource & Public Water Supply Map Series Index

December 2, 2014







Alburg Village Water System  
WSID# 5136

Alburg Golf Links  
WSID# 2478

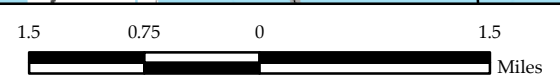
Ruthcliffe Lodge Resort  
WSID# 2159

North Hero Water System  
WSID# 20562

- |                                                                                                                                                                                                                                                                     |                                                                                                                                                                                                 |
|---------------------------------------------------------------------------------------------------------------------------------------------------------------------------------------------------------------------------------------------------------------------|-------------------------------------------------------------------------------------------------------------------------------------------------------------------------------------------------|
| <ul style="list-style-type: none"> <li>NECPL Proposed Lake Alignment (TRC)</li> <li>Aquatic Route</li> <li>Lake HDD</li> <li>Public Water Source</li> <li>Surface Intake</li> <li>Groundwater Source</li> <li>Groundwater SPA</li> <li>Surface Water SPA</li> </ul> | <ul style="list-style-type: none"> <li>Town Boundary</li> <li>Stream (VHD)</li> <li>Railroad</li> <li>Interstate</li> <li>US Highway</li> <li>State Named Highway</li> <li>Town Road</li> </ul> |
|---------------------------------------------------------------------------------------------------------------------------------------------------------------------------------------------------------------------------------------------------------------------|-------------------------------------------------------------------------------------------------------------------------------------------------------------------------------------------------|

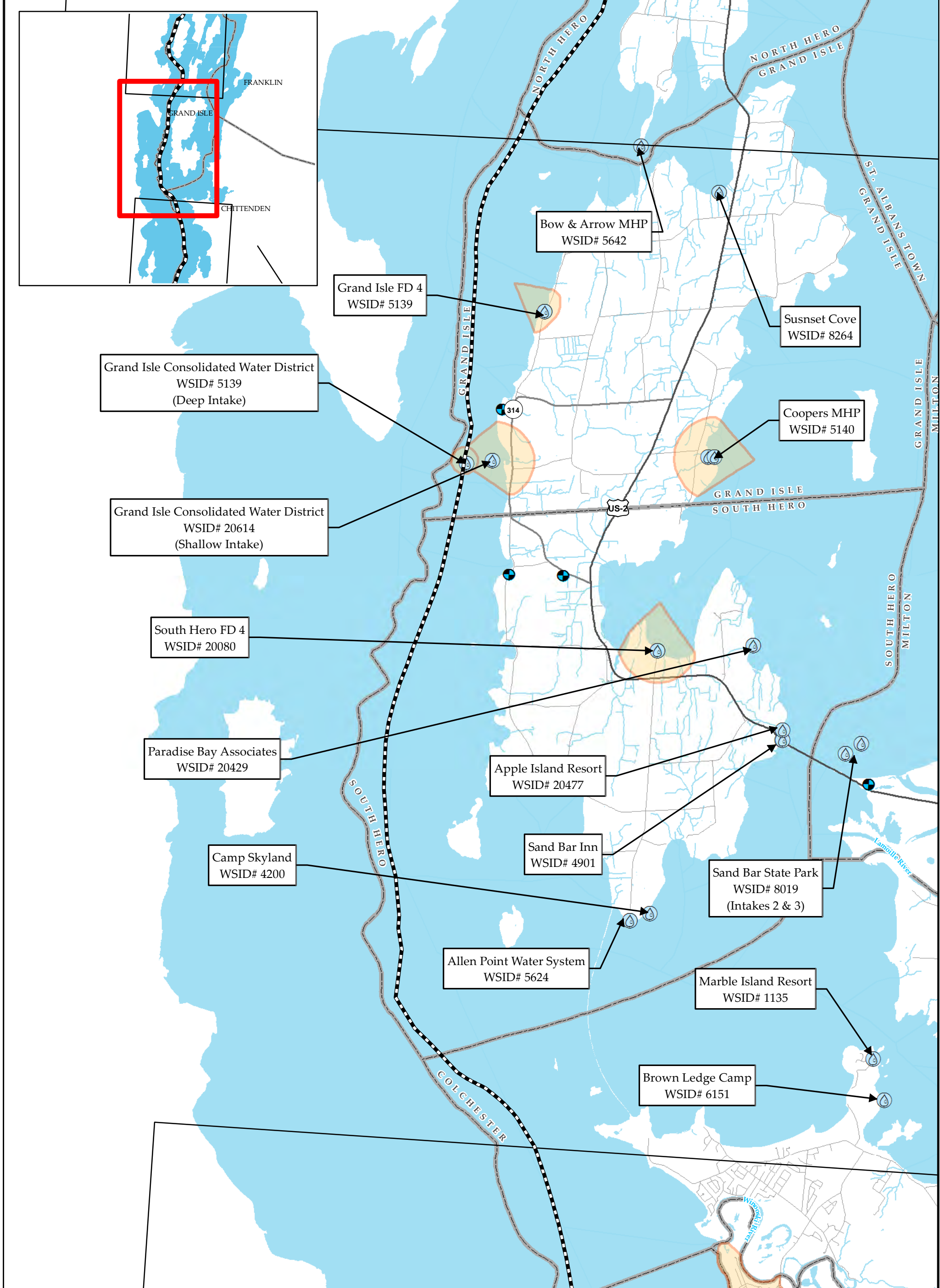
**TDI - NECPL Project**  
**Lake Champlain, Vermont Component**  
**Grand Isle, Rutland, & Windsor Counties, VT**  
**Public Water Supply Map Series**

December 2, 2014  
 Revised: July 2, 2015



Sources: Groundwater SPAs provided by ANR (2014); Surface SPAs by ANR (2014). Roads by VTrans (2009), Streams & Waterbodies by VHD, Town boundaries (2008); Proposed Lake Alignment provided by TRC (2014); Public Water Sources from ANR (2014) except for Grand Isle Consolidated Water District (WSID# 5139) from "Withdraw Pipe Plan - Vermont Fish Hatchery at Grand Isle - Sheet M-1" by Sargent, Webster, Crenshaw and Folley (Project 88-309F).





**Legend:**

- NECPL Proposed Lake Alignment (TRC)
- Aquatic Route
- Lake HDD
- Public Water Source
  - Surface Intake
  - Groundwater Source
  - Groundwater SPA
  - Surface Water SPA
- Town Boundary
- Stream (VHD)
- Railroad
- Interstate
- US Highway
- State Named Highway
- Town Road

**TDI - NECPL Project**  
**Lake Champlain, Vermont Component**  
**Grand Isle, Rutland, & Windsor Counties, VT**  
**Public Water Supply Map Series**

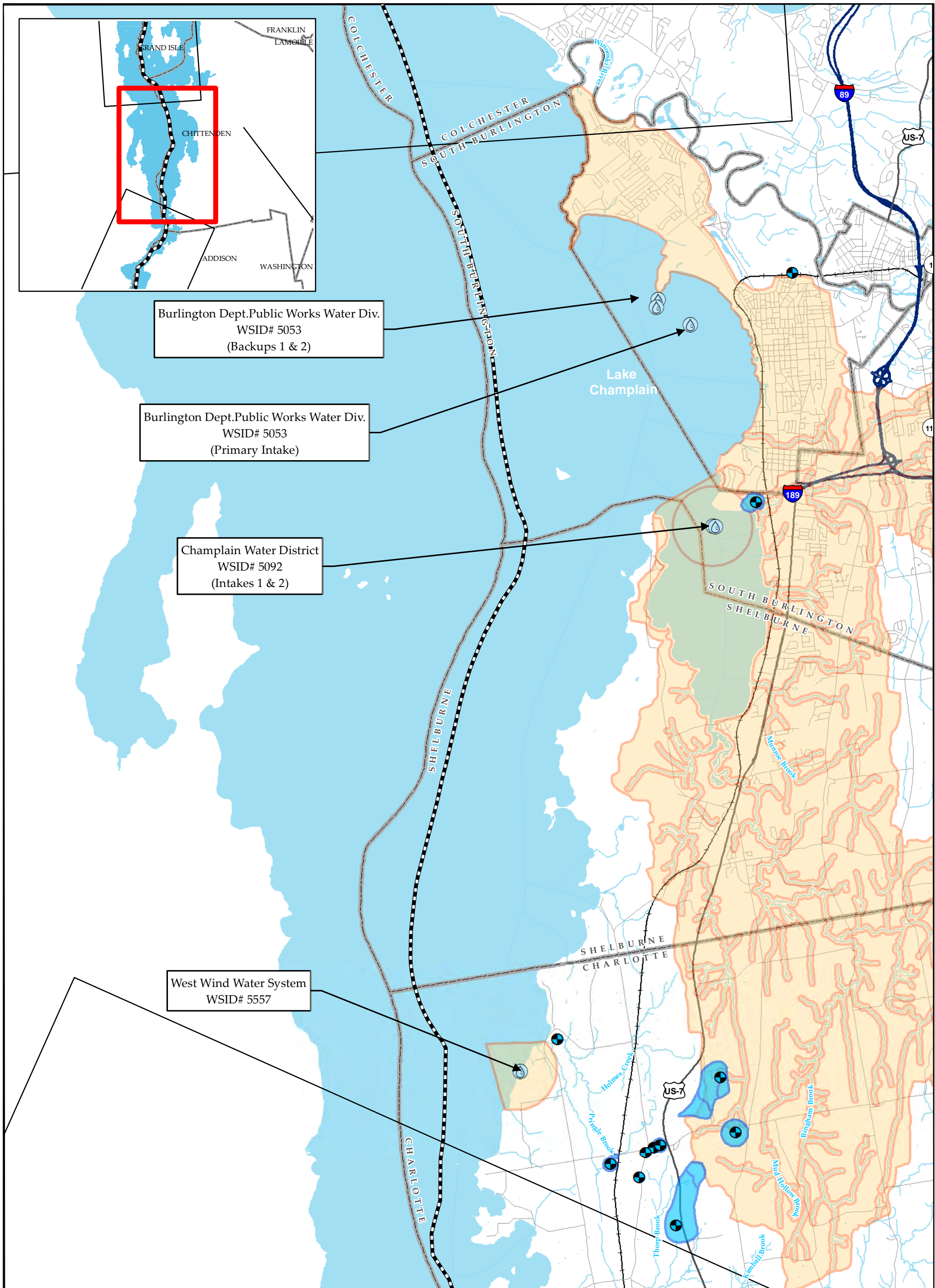
December 2, 2014  
 Revised: July 2, 2015

Page 2 of 6

1.5 0.75 0 1.5  
 Miles

Sources: Groundwater SPAs provided by ANR (2014); Surface SPAs by ANR (2014). Roads by VTrans (2009). Streams & Waterbodies by VHD. Town boundaries (2008); Proposed Lake Alignment provided by TRC (2014); Public Water Sources from ANR (2014) except for Grand Isle Consolidated Water District (WSID# 5139) from "Withdraw Pipe Plan - Vermont Fish Hatchery at Grand Isle - Sheet M-1" by Sargent, Webster, Crenshaw and Folley (Project 88-309F).





Burlington Dept. Public Works Water Div.  
 WSID# 5053  
 (Backups 1 & 2)

Burlington Dept. Public Works Water Div.  
 WSID# 5053  
 (Primary Intake)

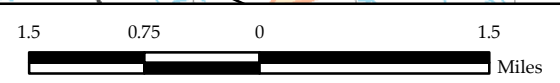
Champlain Water District  
 WSID# 5092  
 (Intakes 1 & 2)

West Wind Water System  
 WSID# 5557

- |                                                                                                                                                                                                                                                                     |                                                                                                                                                                                                 |
|---------------------------------------------------------------------------------------------------------------------------------------------------------------------------------------------------------------------------------------------------------------------|-------------------------------------------------------------------------------------------------------------------------------------------------------------------------------------------------|
| <ul style="list-style-type: none"> <li>NECPL Proposed Lake Alignment (TRC)</li> <li>Aquatic Route</li> <li>Lake HDD</li> <li>Public Water Source</li> <li>Surface Intake</li> <li>Groundwater Source</li> <li>Groundwater SPA</li> <li>Surface Water SPA</li> </ul> | <ul style="list-style-type: none"> <li>Town Boundary</li> <li>Stream (VHD)</li> <li>Railroad</li> <li>Interstate</li> <li>US Highway</li> <li>State Named Highway</li> <li>Town Road</li> </ul> |
|---------------------------------------------------------------------------------------------------------------------------------------------------------------------------------------------------------------------------------------------------------------------|-------------------------------------------------------------------------------------------------------------------------------------------------------------------------------------------------|

**TDI - NECPL Project**  
**Lake Champlain, Vermont Component**  
**Grand Isle, Rutland, & Windsor Counties, VT**  
**Public Water Supply Map Series**

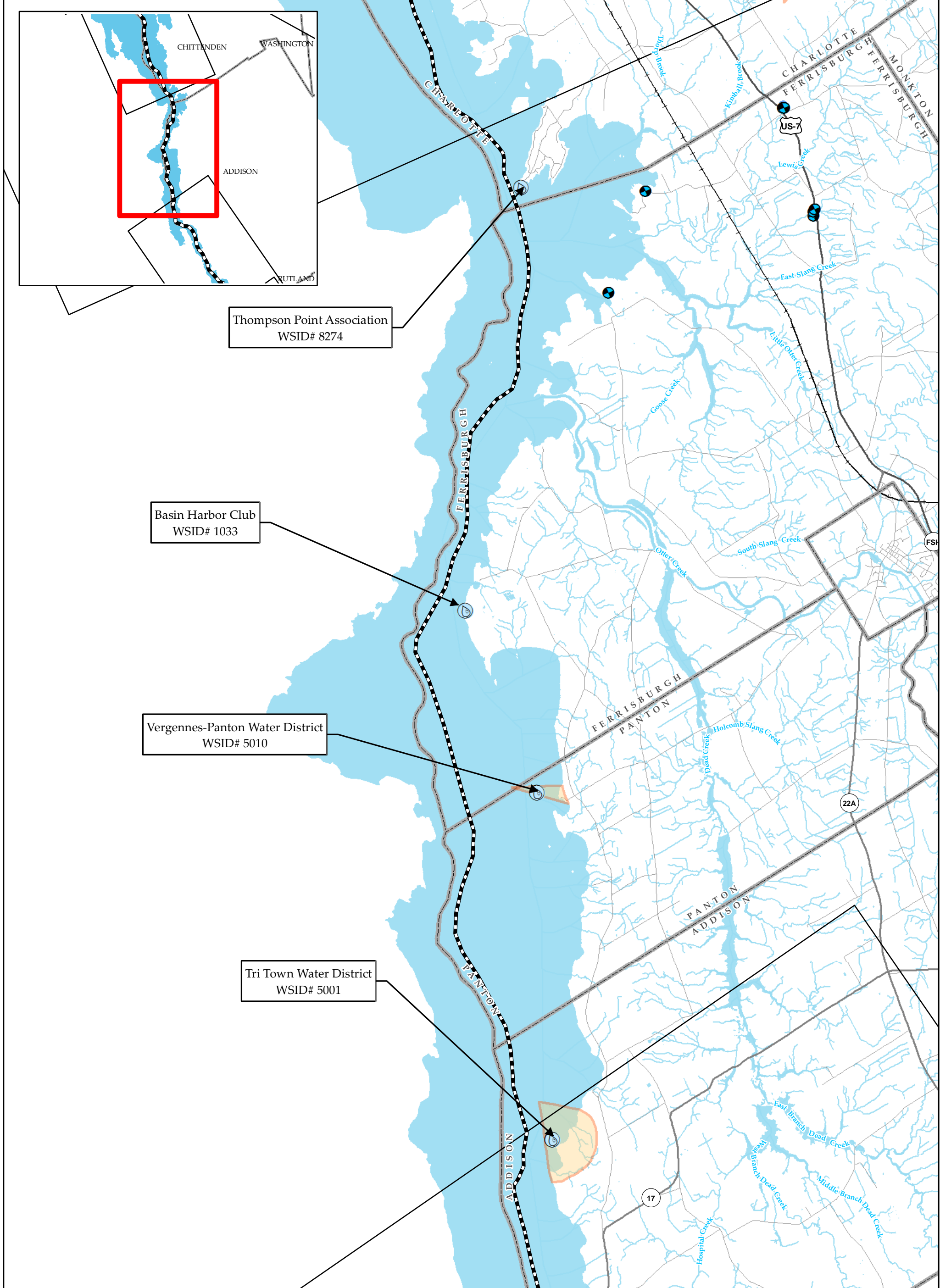
December 2, 2014  
 Revised: July 2, 2015



Sources: Groundwater SPAs provided by ANR (2014); Surface SPAs by ANR (2014); Roads by VTrans (2009); Streams & Waterbodies by VHD; Town boundaries (2008); Proposed Lake Alignment provided by TRC (2014); Public Water Sources from ANR (2014) except for Grand Isle Consolidated Water District (WSID# 5139) from "Withdraw Pipe Plan - Vermont Fish Hatchery at Grand Isle - Sheet M-1" by Sargent, Webster, Crenshaw and Folley (Project 88-309F).







- NECPL Proposed Lake Alignment (TRC)
- Aquatic Route
- Lake HDD
- Public Water Source
  - Surface Intake
  - Groundwater Source
  - Groundwater SPA
  - Surface Water SPA
- Town Boundary
- Stream (VHD)
- Railroad
- Interstate
- US Highway
- State Named Highway
- Town Road

**TDI - NECPL Project**  
**Lake Champlain, Vermont Component**  
**Grand Isle, Rutland, & Windsor Counties, VT**  
**Public Water Supply Map Series**

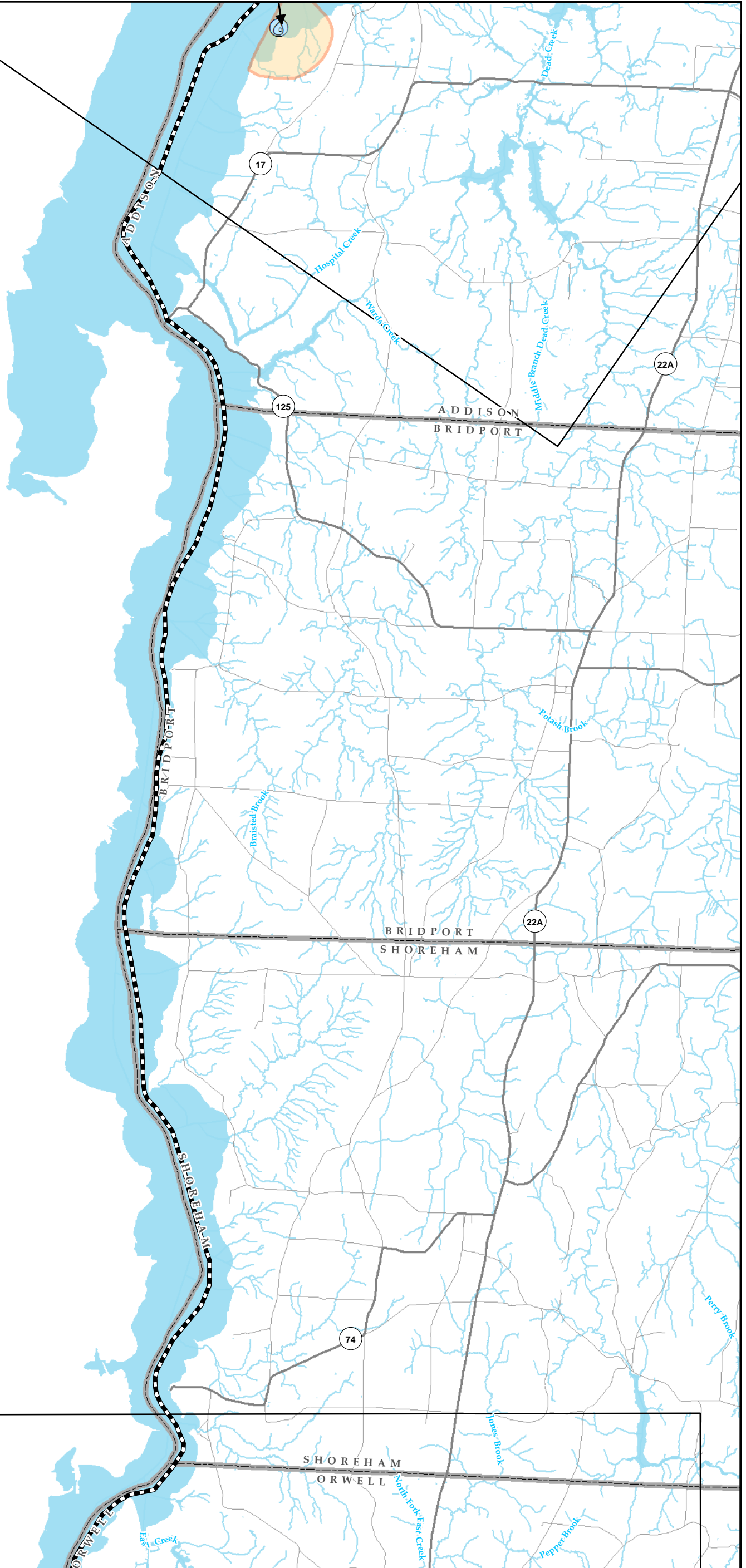
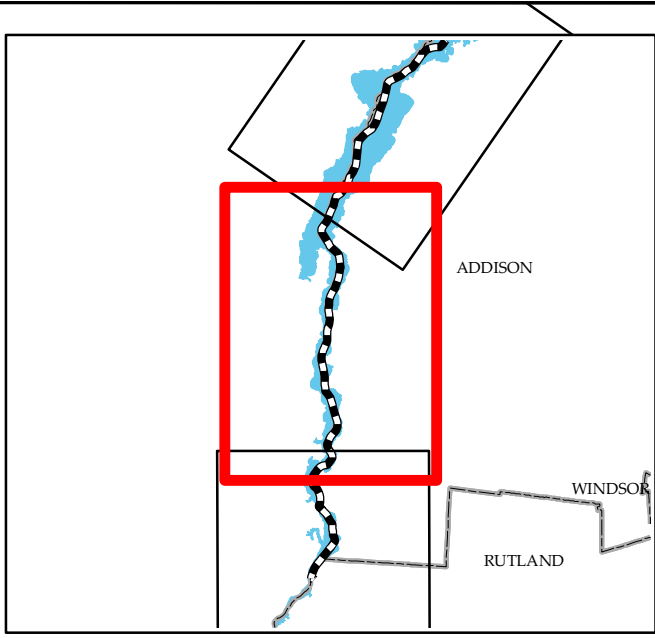
December 2, 2014  
 Revised: July 2, 2015

Page 4 of 6

1.5    0.75    0    1.5  
 Miles

Sources: Groundwater SPAs provided by ANR (2014); Surface SPAs by ANR (2014); Roads by VTrans (2009); Streams & Waterbodies by VHD; Town boundaries (2008); Proposed Lake Alignment provided by TRC (2014); Public Water Sources from ANR (2014) except for Grand Isle Consolidated Water District (WSID# 5139) from "Withdraw Pipe Plan - Vermont Fish Hatchery at Grand Isle - Sheet M-1" by Sargent, Webster, Crenshaw and Folley (Project 88-309F).





- |                                                                                                                                                                                                                                                                     |                                                                                                                                                                                                 |
|---------------------------------------------------------------------------------------------------------------------------------------------------------------------------------------------------------------------------------------------------------------------|-------------------------------------------------------------------------------------------------------------------------------------------------------------------------------------------------|
| <ul style="list-style-type: none"> <li>NECPL Proposed Lake Alignment (TRC)</li> <li>Aquatic Route</li> <li>Lake HDD</li> <li>Public Water Source</li> <li>Surface Intake</li> <li>Groundwater Source</li> <li>Groundwater SPA</li> <li>Surface Water SPA</li> </ul> | <ul style="list-style-type: none"> <li>Town Boundary</li> <li>Stream (VHD)</li> <li>Railroad</li> <li>Interstate</li> <li>US Highway</li> <li>State Named Highway</li> <li>Town Road</li> </ul> |
|---------------------------------------------------------------------------------------------------------------------------------------------------------------------------------------------------------------------------------------------------------------------|-------------------------------------------------------------------------------------------------------------------------------------------------------------------------------------------------|

**TDI - NECPL Project**  
**Lake Champlain, Vermont Component**  
**Grand Isle, Rutland, & Windsor Counties, VT**  
**Public Water Supply Map Series**

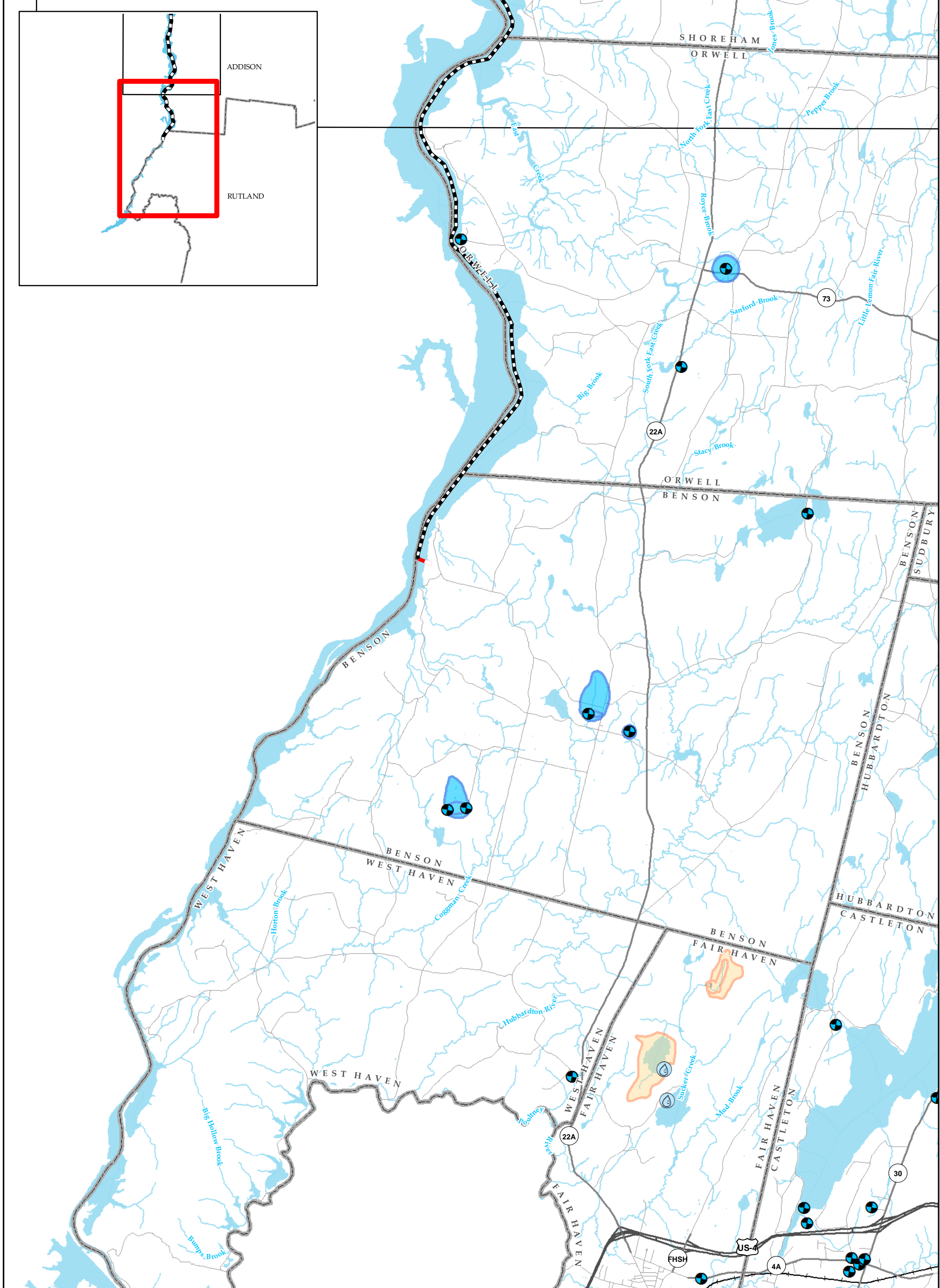
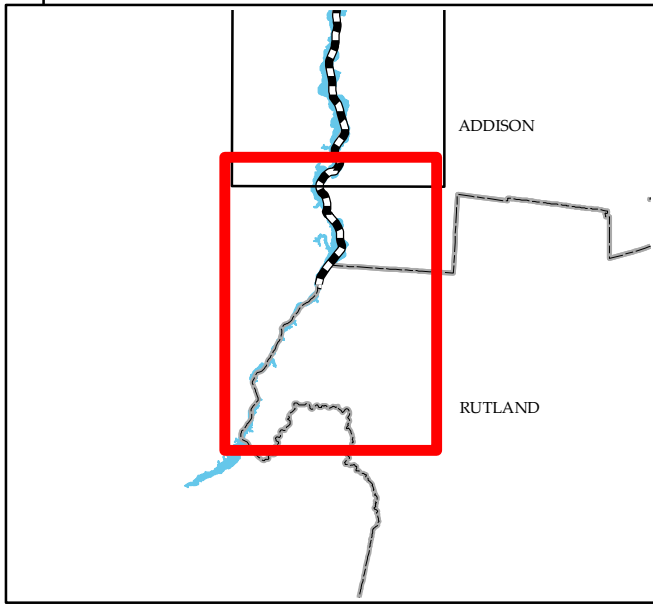
December 2, 2014  
 Revised: July 2, 2015

Page 5 of 6

1.5    0.75    0    1.5  
 Miles

Sources: Groundwater SPAs provided by ANR (2014); Surface SPAs by ANR (2014); Roads by VTrans (2009); Streams & Waterbodies by VHD; Town boundaries (2008); Proposed Lake Alignment provided by TRC (2014); Public Water Sources from ANR (2014) except for Grand Isle Consolidated Water District (WSID# 5139) from "Withdraw Pipe Plan - Vermont Fish Hatchery at Grand Isle - Sheet M-1" by Sargent, Webster, Crenshaw and Folley (Project 88-309F).



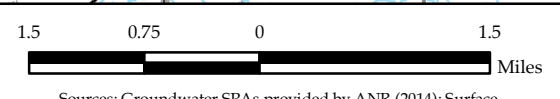


- NECPL Proposed Lake Alignment (TRC)
- Aquatic Route
- Lake HDD
- Public Water Source
  - Surface Intake
  - Groundwater Source
  - Groundwater SPA
  - Surface Water SPA
- Town Boundary
- Stream (VHD)
- Railroad
- Interstate
- US Highway
- State Named Highway
- Town Road

**TDI - NECPL Project**  
**Lake Champlain, Vermont Component**  
**Grand Isle, Rutland, & Windsor Counties, VT**  
**Public Water Supply Map Series**

December 2, 2014  
 Revised: July 2, 2015

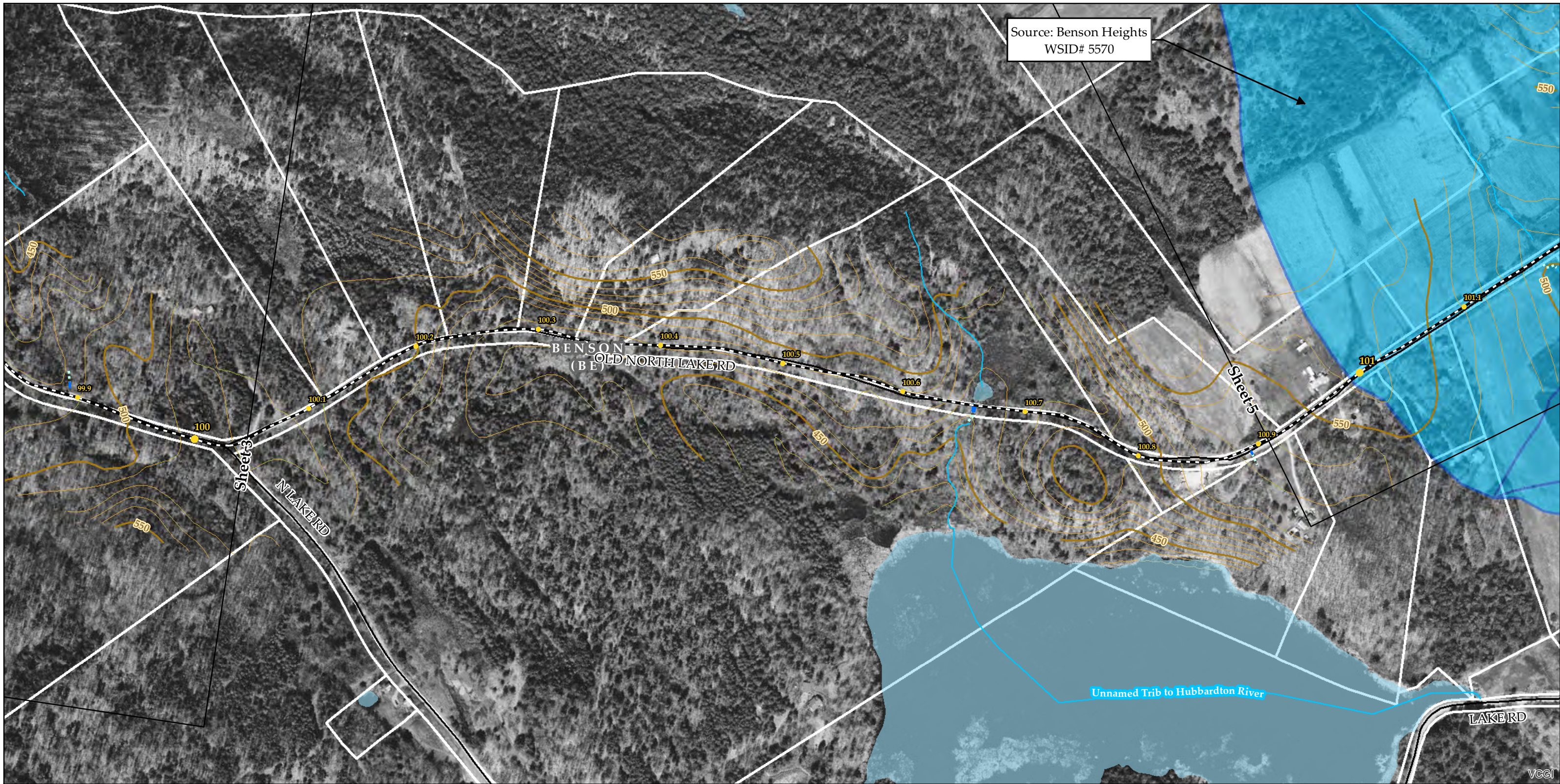
Page 6 of 6



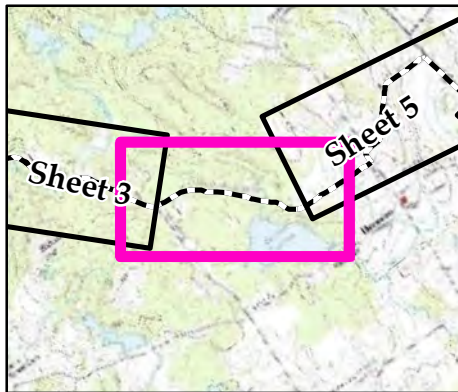
Sources: Groundwater SPAs provided by ANR (2014); Surface SPAs by ANR (2014); Roads by VTrans (2009); Streams & Waterbodies by VHD; Town boundaries (2008); Proposed Lake Alignment provided by TRC (2014); Public Water Sources from ANR (2014) except for Grand Isle Consolidated Water District (WSID# 5139) from "Withdraw Pipe Plan - Vermont Fish Hatchery at Grand Isle - Sheet M-1" by Sargent, Webster, Crenshaw and Folley (Project 88-309F).







Sources: Background provided by VCGI (2007-2013); Provided by VCGI; Roads by VTrans (2012); Streams & Waterbodies by VHD (2010); VSWI Wetlands by ANR (2013); County and Town Boundaries by VCGI (2012); Contours (2014); Conceptual Project Alignment (2015), VTrans ROW (2014), and Parcel Boundaries (2009-2013) provided by TRC; 100-year flood & Floodway compiled by TRC from FEMA (2014); Wetland & Stream Delineations by TRC & VHB (2014); Public Water Sources and SPAs from ANR (2013)

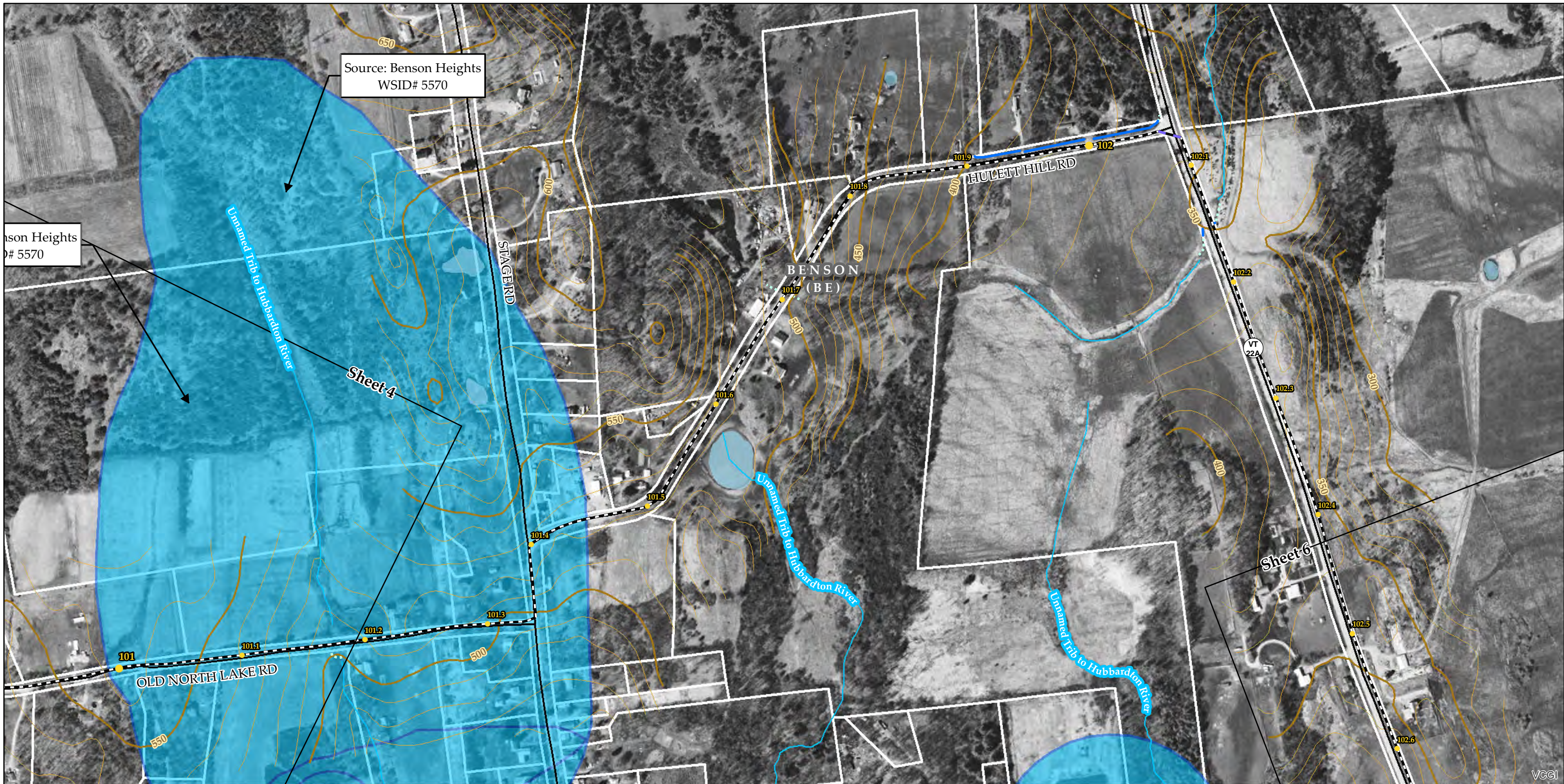


Public Water Source	Named VHD Stream	Mile Post (TRC)	Project Parcels (TRC)
Groundwater SPA	Unnamed VHD Stream	NECPL Proposed Overland Alignment (TRC)	Town Boundary (VCGI)
Surface Water SPA	Approximate Streams (TRC/VHB)	HDD	Country Boundary (VCGI)
	Delineated Streams (TRC/VHB)	Jack and Bore	Parcel Boundary (TRC)
	Waterbody (VHD)	Terrestrial Cable	Roads (VTrans)
		Sheet Outline	50 Ft. Contour
			10 Ft. Contour

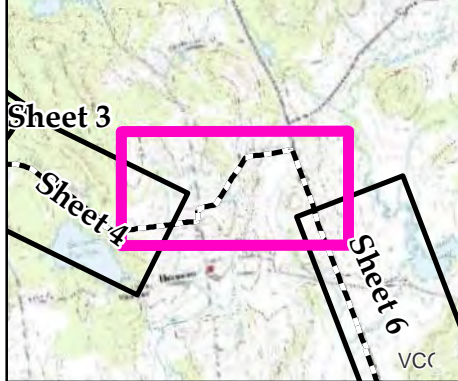
**TDI - NECPL Project  
Overland Component  
Grand Isle, Rutland, & Windsor Counties, VT  
Natural Resource & Public Water Supply  
Map Series**

Sheet Number 4 of 51  
December 2, 2014  
Revised: August 6, 2015





Sources: Background provided by VCGI (2007-2013); Provided by VCGI: Roads by VTrans (2012); Streams & Waterbodies by VHD (2010), VSWI Wetlands by ANR (2013); County and Town Boundaries by VCGI (2012); Contours (2014), Conceptual Project Alignment (2014), VTrans ROW (2014), and Parcel Boundaries (2009-2013) provided by TRC; 100-year flood & Floodway compiled by TRC from FEMA (2014), Wetland & Stream Delineations by TRC & VHB (2014); Public Water Sources and SPAs from ANR (2013)



Public Water Source	Named VHD Stream	Mile Post (TRC)	Project Parcels (TRC)
Groundwater SPA	Unnamed VHD Stream	NECPL Proposed Overland Alignment (TRC)	Town Boundary (VCGI)
Surface Water SPA	Approximate Streams (TRC/VHB)	HDD	Country Boundary (VCGI)
	Delineated Streams (TRC/VHB)	Jack and Bore	Parcel Boundary (TRC)
	Waterbody (VHD)	Terrestrial Cable	Roads (VTrans)
		Sheet Outline	50 Ft. Contour
			10 Ft. Contour

**TDI - NECPL Project  
Overland Component**

**Grand Isle, Rutland, & Windsor Counties, VT**

**Natural Resource & Public Water Supply**

**Map Series**

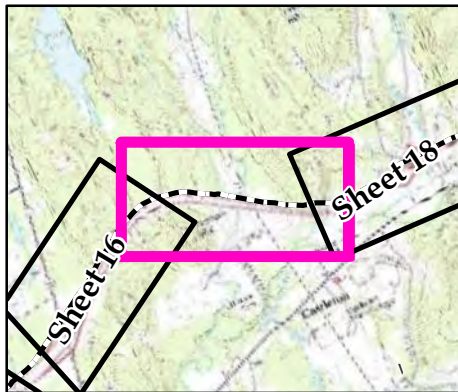
Sheet Number 5 of 51  
December 2, 2014





Castleton FD 1  
WSID# 5212

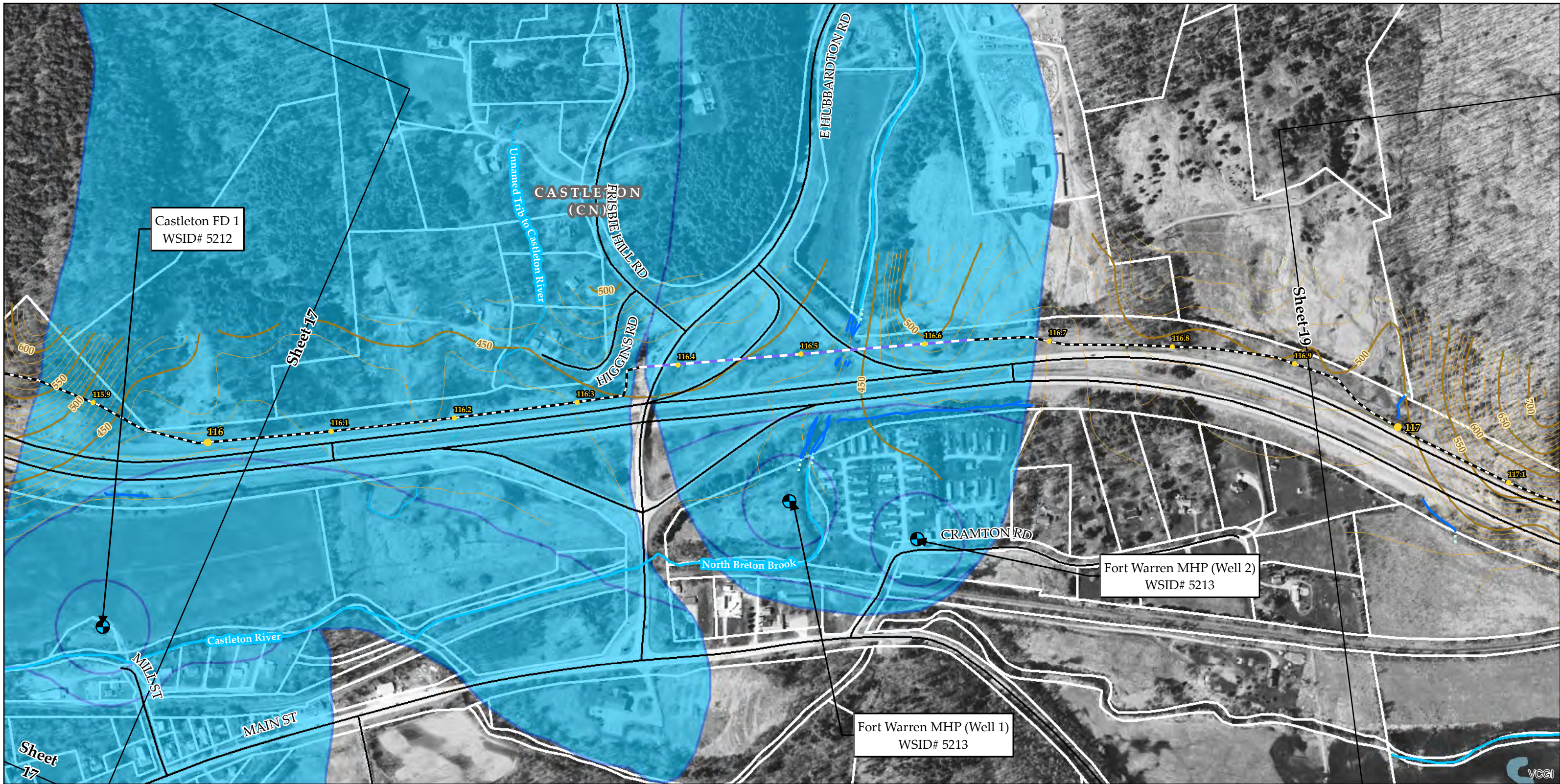
Sources: Background provided by VCGI (2007-2013); Provided by VCGI: Roads by VTrans (2012); Streams & Waterbodies by VHD (2010), VSWI Wetlands by ANR (2013); County and Town Boundaries by VCGI (2012); Contours (2014), Conceptual Project Alignment (2014), VTrans ROW (2014), and Parcel Boundaries (2009-2013) provided by TRC; 100-year flood & Floodway compiled by TRC from FEMA (2014), Wetland & Stream Delineations by TRC & VHB (2014); Public Water Sources and SPAs from ANR (2013)



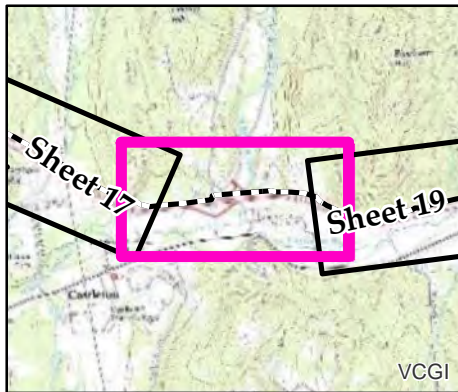
- |                     |                               |                                         |                         |
|---------------------|-------------------------------|-----------------------------------------|-------------------------|
| Public Water Source | Named VHD Stream              | Mile Post (TRC)                         | Project Parcels (TRC)   |
| Groundwater SPA     | Unnamed VHD Stream            | NECPL Proposed Overland Alignment (TRC) | Town Boundary (VCGI)    |
| Surface Water SPA   | Approximate Streams (TRC/VHB) | HDD                                     | Country Boundary (VCGI) |
|                     | Delineated Streams (TRC/VHB)  | Jack and Bore                           | Parcel Boundary (TRC)   |
|                     | Waterbody (VHD)               | Terrestrial Cable                       | Roads (VTrans)          |
|                     |                               | Sheet Outline                           | 50 Ft. Contour          |
|                     |                               |                                         | 10 Ft. Contour          |

**TDI - NECPL Project  
Overland Component**  
**Grand Isle, Rutland, & Windsor Counties, VT**  
**Natural Resource & Public Water Supply**  
**Map Series**  
 Sheet Number 17 of 51  
 December 2, 2014





Sources: Background provided by VCGI (2007-2013); Provided by VCGI: Roads by VTrans (2012); Streams & Waterbodies by VHD (2010), VSWI Wetlands by ANR (2013); County and Town Boundaries by VCGI (2012); Contours (2014), Conceptual Project Alignment (2015), VTrans ROW (2014), and Parcel Boundaries (2009-2013) provided by TRC; 100-year flood & Floodway compiled by TRC from FEMA (2014), Wetland & Stream Delineations by TRC & VHB (2014); Public Water Sources and SPAs from ANR (2013)



Public Water Source	Named VHD Stream	Mile Post (TRC)	Project Parcels (TRC)
Groundwater SPA	Unnamed VHD Stream	NECPL Proposed Overland Alignment (TRC)	Town Boundary (VCGI)
Surface Water SPA	Approximate Streams (TRC/VHB)	HDD	Country Boundary (VCGI)
	Delineated Streams (TRC/VHB)	Jack and Bore	Parcel Boundary (TRC)
	Waterbody (VHD)	Terrestrial Cable	Roads (VTrans)
		Sheet Outline	50 Ft. Contour
			10 Ft. Contour

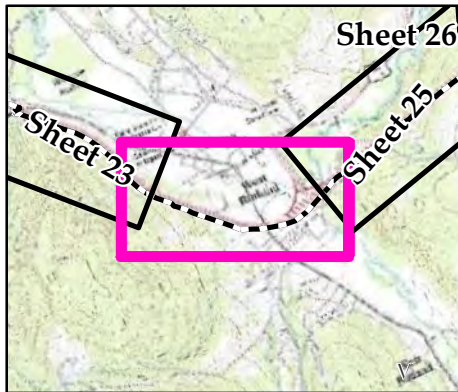
**TDI - NECPL Project  
Overland Component  
Grand Isle, Rutland, & Windsor Counties, VT  
Natural Resource & Public Water Supply  
Map Series**

Sheet Number 18 of 51  
December 2, 2014  
Revised: August 6, 2015





Sources: Background provided by VCGI (2007-2013); Provided by VCGI: Roads by VTrans (2012); Streams & Waterbodies by VHD (2010), VSWI Wetlands by ANR (2013); County and Town Boundaries by VCGI (2012); Contours (2014), Conceptual Project Alignment (2015), VTrans ROW (2014), and Parcel Boundaries (2009-2013) provided by TRC; 100-year flood & Floodway compiled by TRC from FEMA (2014), Wetland & Stream Delineations by TRC & VHB (2014); Public Water Sources and SPAs from ANR (2013)

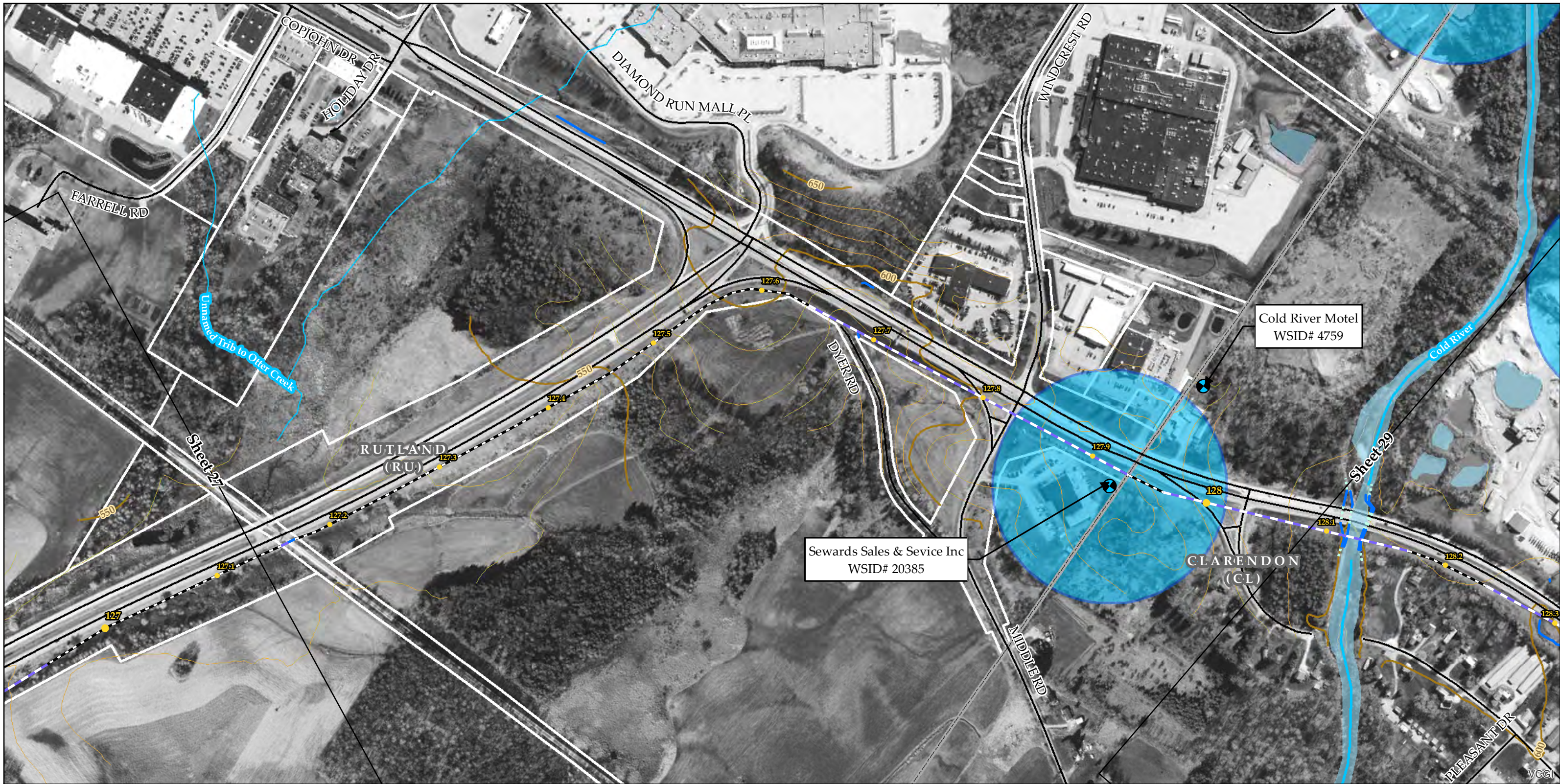


Public Water Source	Named VHD Stream	Mile Post (TRC)	Project Parcels (TRC)
Groundwater SPA	Unnamed VHD Stream	NECPL Proposed Overland Alignment (TRC)	Town Boundary (VCGI)
Surface Water SPA	Approximate Streams (TRC/VHB)	HDD	Country Boundary (VCGI)
	Delineated Streams (TRC/VHB)	Jack and Bore	Parcel Boundary (TRC)
	Waterbody (VHD)	Terrestrial Cable	Roads (VTrans)
		Sheet Outline	50 Ft. Contour
			10 Ft. Contour

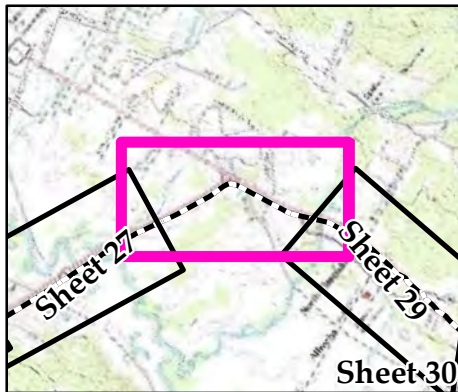
**TDI - NECPL Project Overland Component**  
**Grand Isle, Rutland, & Windsor Counties, VT**  
**Natural Resource & Public Water Supply**  
**Map Series**

Sheet Number 24 of 51  
 December 2, 2014  
 Revised: August 6, 2015





Sources: Background provided by VCGI (2007-2013); Provided by VCGI; Roads by VTrans (2012); Streams & Waterbodies by VHD (2010); VSWI Wetlands by ANR (2013); County and Town Boundaries by VCGI (2012); Contours (2014); Conceptual Project Alignment (2015); VTrans ROW (2014); and Parcel Boundaries (2009-2013) provided by TRC; 100-year flood & Floodway compiled by TRC from FEMA (2014); Wetland & Stream Delineations by TRC & VHB (2014); Public Water Sources and SPAs from ANR (2013)



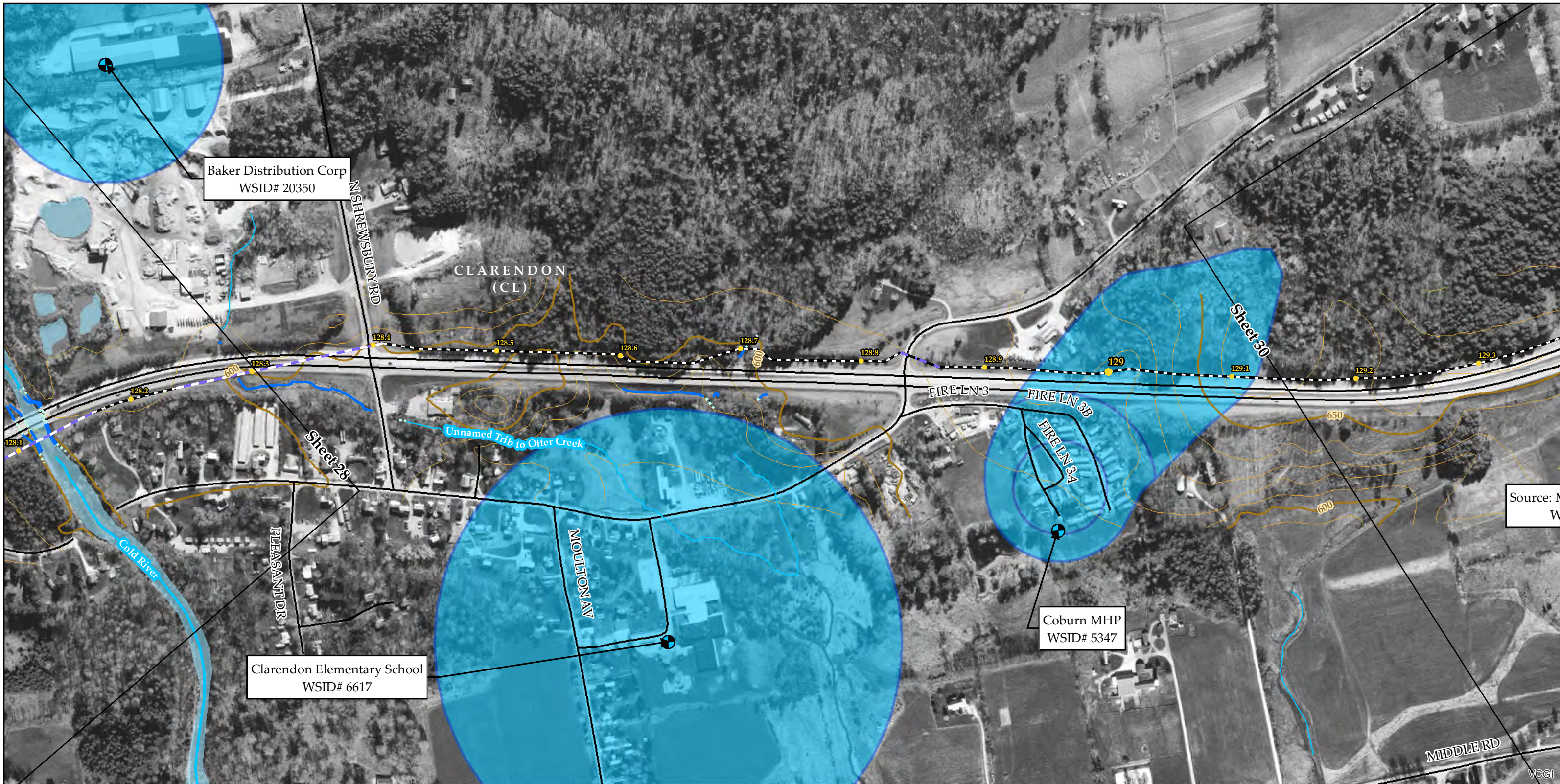
Public Water Source	Named VHD Stream	Mile Post (TRC)	Project Parcels (TRC)
Groundwater SPA	Unnamed VHD Stream	NECPL Proposed Overland Alignment (TRC)	Town Boundary (VCGI)
Surface Water SPA	Approximate Streams (TRC/VHB)	HDD	Country Boundary (VCGI)
	Delineated Streams (TRC/VHB)	Jack and Bore	Parcel Boundary (TRC)
	Waterbody (VHD)	Terrestrial Cable	Roads (VTrans)
		Sheet Outline	50 Ft. Contour
			10 Ft. Contour

**TDI - NECPL Project  
Overland Component  
Grand Isle, Rutland, & Windsor Counties, VT  
Natural Resource & Public Water Supply  
Map Series**

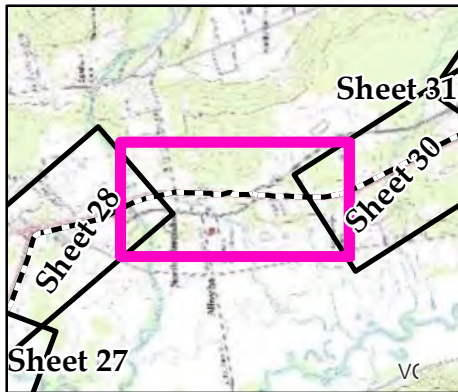
Sheet Number 28 of 51  
December 2, 2014  
Revised: August 6, 2015

400 200 0 400  
Feet





Sources: Background provided by VCGI (2007-2013); Provided by VCGI: Roads by VTrans (2012); Streams & Waterbodies by VHD (2010), VSWI Wetlands by ANR (2013); County and Town Boundaries by VCGI (2012); Contours (2014), Conceptual Project Alignment (2015), VTrans ROW (2014), and Parcel Boundaries (2009-2013) provided by TRC; 100-year flood & Floodway compiled by TRC from FEMA (2014), Wetland & Stream Delineations by TRC & VHB (2014); Public Water Sources and SPAs from ANR (2013)

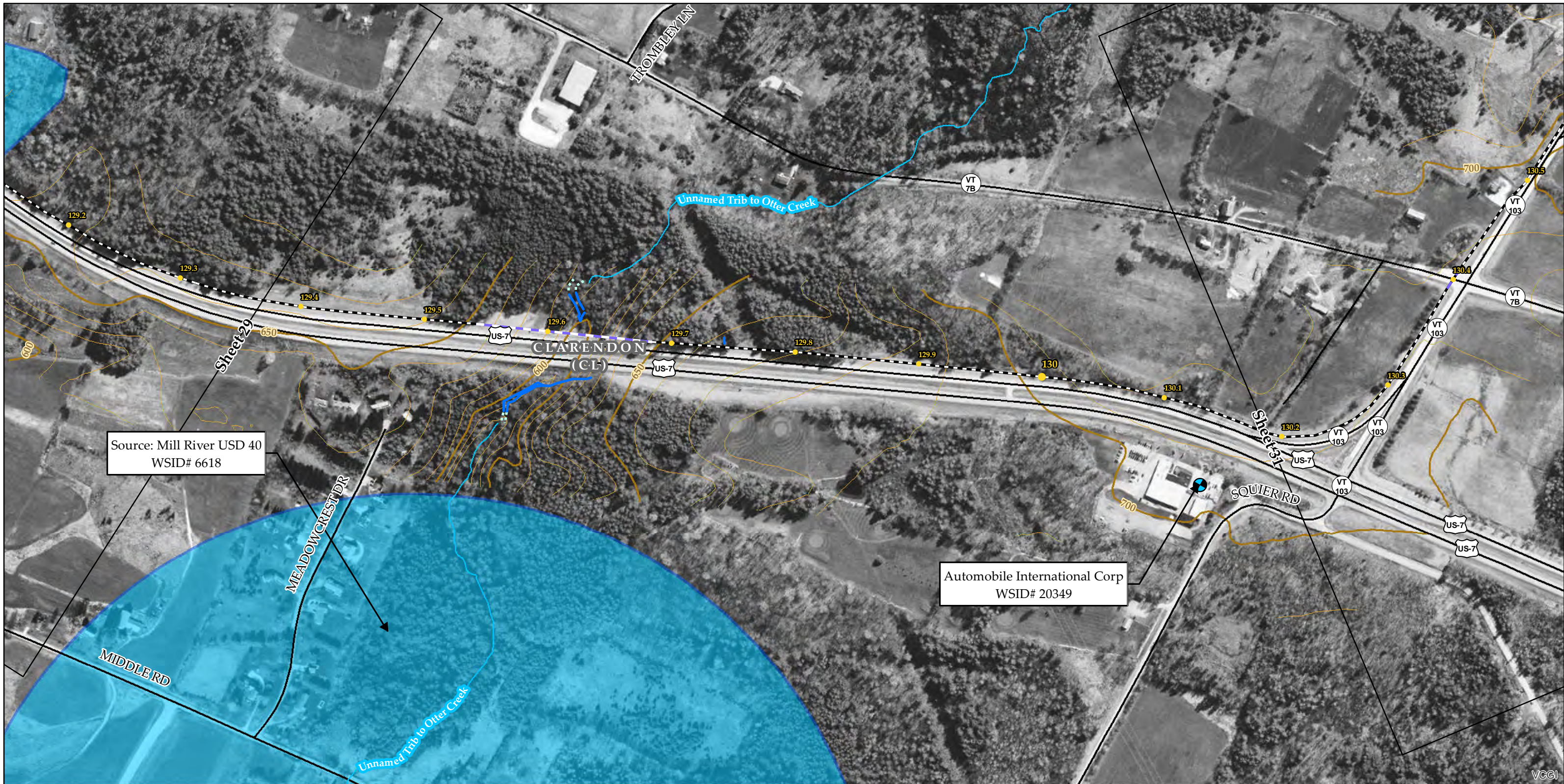


Public Water Source	Named VHD Stream	Mile Post (TRC)	Project Parcels (TRC)
Groundwater SPA	Unnamed VHD Stream	NECPL Proposed Overland Alignment (TRC)	Town Boundary (VCGI)
Surface Water SPA	Approximate Streams (TRC/VHB)	HDD	Country Boundary (VCGI)
	Delineated Streams (TRC/VHB)	Jack and Bore	Parcel Boundary (TRC)
	Waterbody (VHD)	Terrestrial Cable	Roads (VTrans)
		Sheet Outline	50 Ft. Contour
			10 Ft. Contour

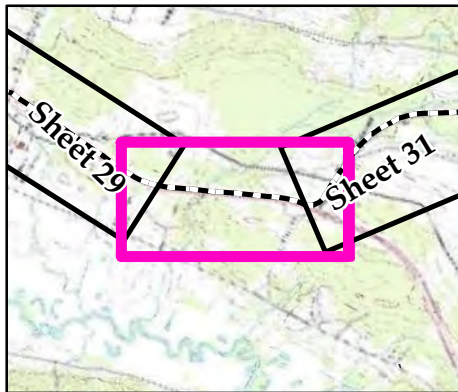
**TDI - NECPL Project  
Overland Component  
Grand Isle, Rutland, & Windsor Counties, VT  
Natural Resource & Public Water Supply  
Map Series**

Sheet Number 29 of 51  
December 2, 2014  
Revised: August 6, 2015





Sources: Background provided by VCGI (2007-2013); Provided by VCGI: Roads by VTrans (2012); Streams & Waterbodies by VHD (2010), VSWI Wetlands by ANR (2013); County and Town Boundaries by VCGI (2012); Contours (2014), Conceptual Project Alignment (2014), VTrans ROW (2014), and Parcel Boundaries (2009-2013) provided by TRC; 100-year flood & Floodway compiled by TRC from FEMA (2014), Wetland & Stream Delineations by TRC & VHB (2014); Public Water Sources and SPAs from ANR (2013)



Public Water Source	Named VHD Stream	Mile Post (TRC)	Project Parcels (TRC)
Groundwater SPA	Unnamed VHD Stream	NECPL Proposed Overland Alignment (TRC)	Town Boundary (VCGI)
Surface Water SPA	Approximate Streams (TRC/VHB)	HDD	Country Boundary (VCGI)
	Delineated Streams (TRC/VHB)	Jack and Bore	Parcel Boundary (TRC)
	Waterbody (VHD)	Terrestrial Cable	Roads (VTrans)
		Sheet Outline	50 Ft. Contour
			10 Ft. Contour

**TDI - NECPL Project  
Overland Component**

**Grand Isle, Rutland, & Windsor Counties, VT**

**Natural Resource & Public Water Supply**

**Map Series**

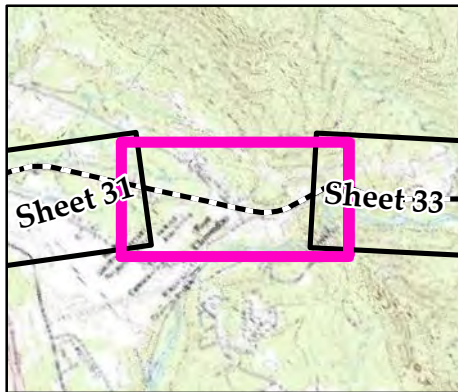
Sheet Number 30 of 51  
December 2, 2014

400 200 0 400  
Feet





Sources: Background provided by VCGI (2007-2013); Provided by VCGI: Roads by VTrans (2012); Streams & Waterbodies by VHD (2010), VSWI Wetlands by ANR (2013); County and Town Boundaries by VCGI (2012); Contours (2014), Conceptual Project Alignment (2014), VTrans ROW (2014), and Parcel Boundaries (2009-2013) provided by TRC; 100-year flood & Floodway compiled by TRC from FEMA (2014), Wetland & Stream Delineations by TRC & VHB (2014); Public Water Sources and SPAs from ANR (2013)



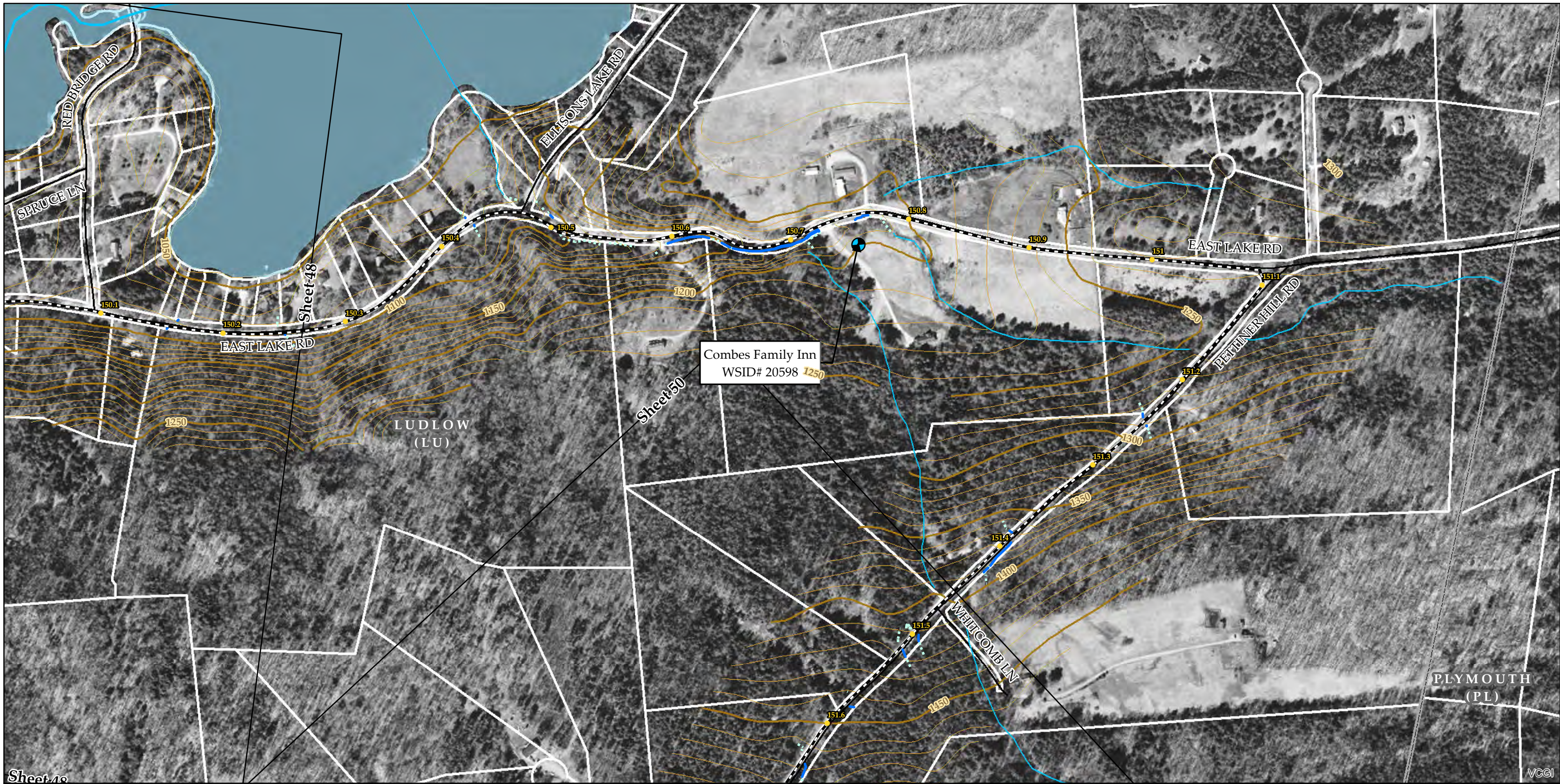
Public Water Source	Named VHD Stream	Mile Post (TRC)	Project Parcels (TRC)
Groundwater SPA	Unnamed VHD Stream	NECPL Proposed Overland Alignment (TRC)	Town Boundary (VCGI)
Surface Water SPA	Approximate Streams (TRC/VHB)	HDD	Country Boundary (VCGI)
	Delineated Streams (TRC/VHB)	Jack and Bore	Parcel Boundary (TRC)
	Waterbody (VHD)	Terrestrial Cable	Roads (VTrans)
		Sheet Outline	50 Ft. Contour
			10 Ft. Contour

**TDI - NECPL Project  
Overland Component**  
Grand Isle, Rutland, & Windsor Counties, VT  
Natural Resource & Public Water Supply

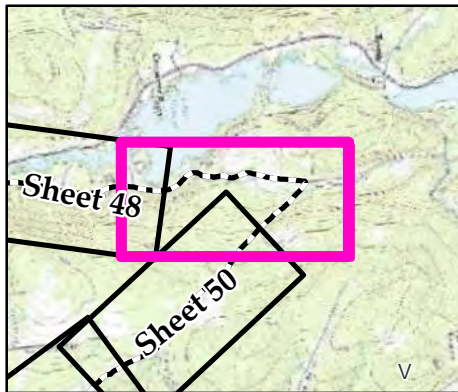
**Map Series**  
Sheet Number 32 of 51  
December 2, 2014

400 200 0 400  
Feet





Sources: Background provided by VCGI (2007-2013); Provided by VCGI: Roads by VTrans (2012); Streams & Waterbodies by VHD (2010), VSWI Wetlands by ANR (2013); County and Town Boundaries by VCGI (2012); Contours (2014), Conceptual Project Alignment (2014), VTrans ROW (2014), and Parcel Boundaries (2009-2013) provided by TRC; 100-year flood & Floodway compiled by TRC from FEMA (2014), Wetland & Stream Delineations by TRC & VHB (2014); Public Water Sources and SPAs from ANR (2013)



Public Water Source	Named VHD Stream	Mile Post (TRC)	Project Parcels (TRC)
Groundwater SPA	Unnamed VHD Stream	NECPL Proposed Overland Alignment (TRC)	Town Boundary (VCGI)
Surface Water SPA	Approximate Streams (TRC/VHB)	HDD	Country Boundary (VCGI)
	Delineated Streams (TRC/VHB)	Jack and Bore	Parcel Boundary (TRC)
	Waterbody (VHD)	Terrestrial Cable	Roads (VTrans)
		Sheet Outline	50 Ft. Contour
			10 Ft. Contour

**TDI - NECPL Project  
Overland Component**

**Grand Isle, Rutland, & Windsor Counties, VT**

**Natural Resource & Public Water Supply**

**Map Series**

Sheet Number 49 of 51  
December 2, 2014